

JSTRON

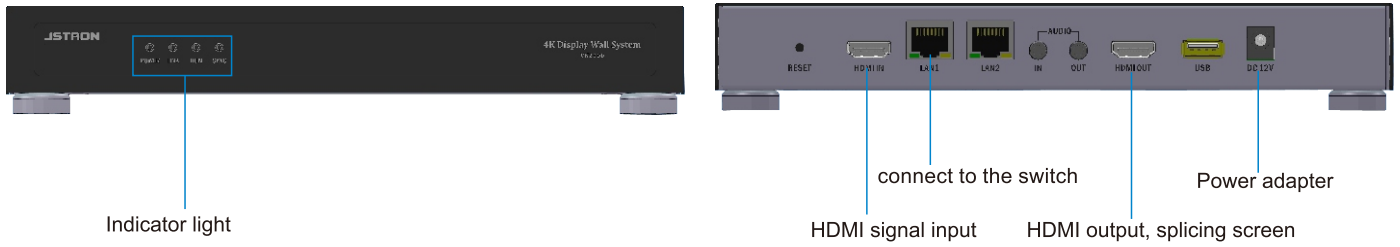


Video Net Intelligent Cloud Splicing System

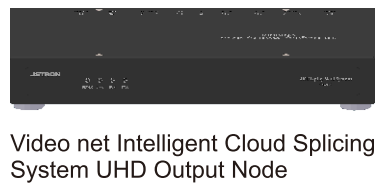
A new era of intelligent splicing

Video Net Intelligent Cloud Splicing System

Video Net Intelligent Cloud Splicing System, a new generation of the splicing processor system, not only has the advantages of distributed processing, but also has the characteristics of the hardware processor. A single splicing node can decode 16-channel 1080p signal, and support local signal input without coding; decoded signal and local input signal can realize the arbitrary cross-device, roaming and overlapping display in the splicing wall, as well as the scheduling and sharing among splicing wall groups.

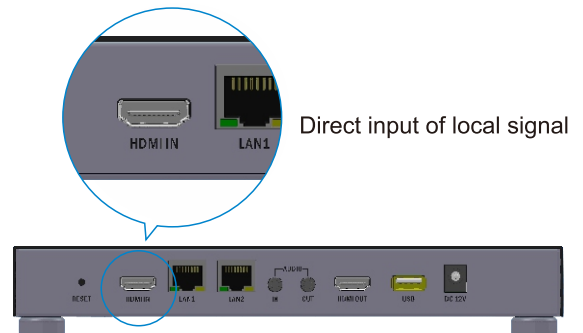


A box with multi-functions



Support direct access to local signals.

Vn2000 Cloud Splicing Box provides HDMI input interface to support direct access of local BNC/DVI/VGA/HDMI/component signal, without adding an encoding box at the front end, which saves cost. Direct connection signal also has splicing function, which supports the arbitrary cross-device, roaming and overlapping display in the splicing wall. Besides, all local direct connection signals can also have access to the Cloud, and roaming and sharing can be realized in all cloud splicing systems.



Real synchronization of large screen echo

The echo of the frames on the splicing wall can be performed at the client-side or on other display screens, which realizes consistent monitoring and display. The echo frame rate is up to 15 FPS, which is fluent (other manufacturers: less than 10 FPS).

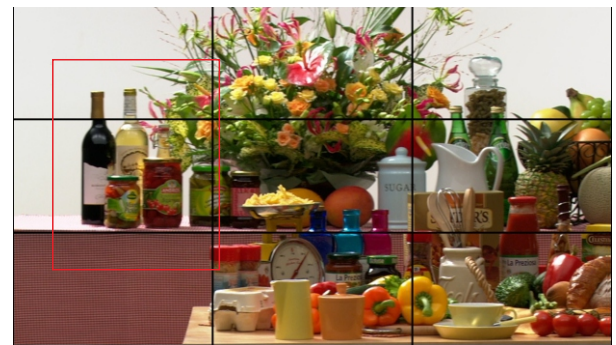


The most accurate synchronization performance in the industry

Inter-screen refreshing synchronization is $<20\mu\text{s}$, which meets the requirements of synchronization in the limit test. In case of displaying cross-device images, the inter-screen display contents should be coherent with no dislocation, fully satisfying the synchronization requirements of HD video playing, security monitoring images, industry graph display and so on.



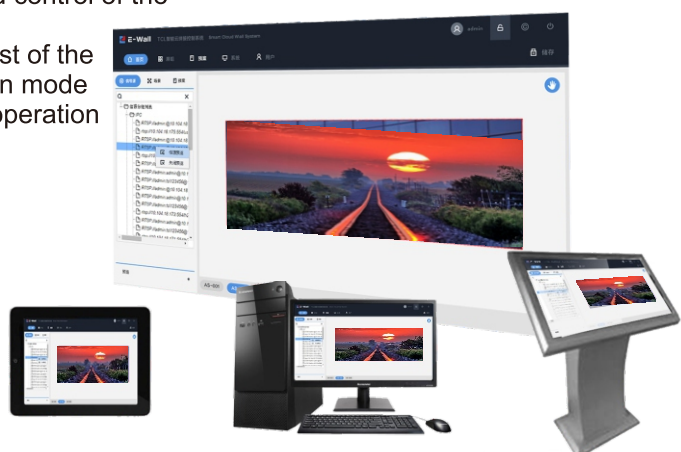
VN2000



一般品牌：显示错位

Flexible control

Video Net Intelligent Cloud Splicing System adopts B/S framework; Both PC and Pad can realize fast management and control of the cloud splicing system; Real-time signal echo enables users to keep abreast of the real-time dynamic information, and visual interaction mode provides users with more intuitive and convenient operation experience.



Application scenarios

Access to local signals

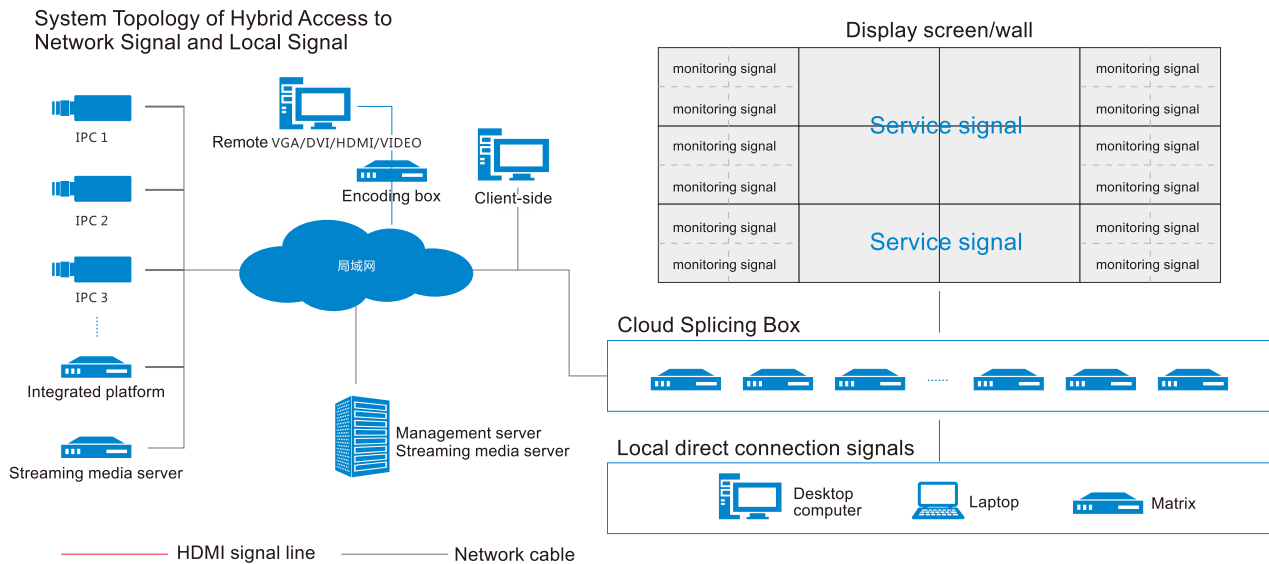
Direct access of local signals to the Cloud Splicing Box, without adding an encoder;
 Direct connection signal also has splicing function, which supports the cross-device, roaming and overlapping display in any splicing screen.

Network signal access

Network signal has access to decoding display, without an external connection with decoding device;
 Each screen can bear simultaneous display of 16-channel 1080P signals at maximum;
 It has no limit on the total number of accessing network signals.

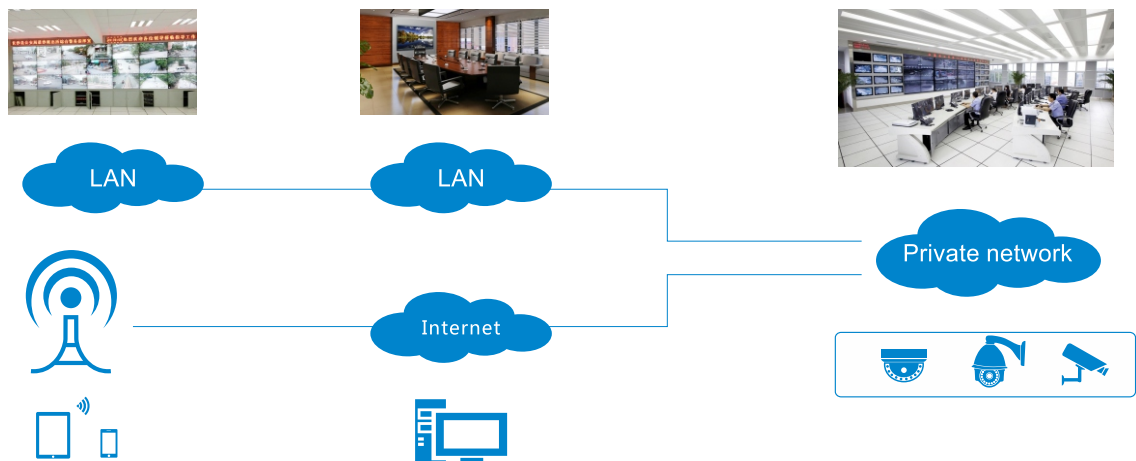
Hybrid access to network signal and local signal

Network signal has access to decoding display, without an external connection with decoding device;
 Direct access of local signals to display, without adding an encoding box;
 Both network signal and local signal can achieve arbitrary roaming, cross-device and overlapping in the system.



Cross-device sharing

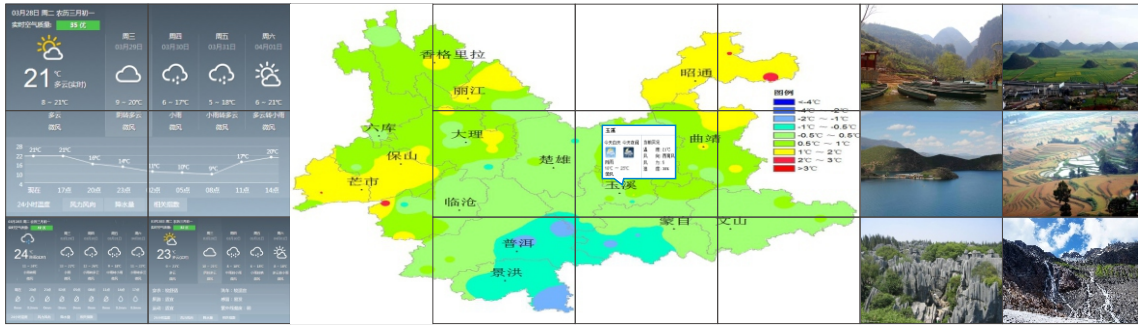
Signal sharing and scheduling for splicing walls and areas;
 Centralized management and unified background management.



Application based on graph management

Visual information, charts, and data are presented based on the UHD graphs, and the association with the corresponding business system can greatly improve the efficiency of operation, management and decision-making.

Diagram of weather bureau application



Weather bureau UHD graph for the management of weather under jurisdiction. The weather under jurisdiction is clear at a glance on the graph, and the acquisition and real-time viewing of video supervisory signals in corresponding areas are conducive to rapid command and decision-making.

Diagram of PSB application



PGIS map can realize the fast viewing of on-site surveillance video and police mobile video, the location of police officers and police vehicles, and the whole-process visualization of command and dispatch.

Technical parameters

| | | |
|----------------------------|------------------------------|---|
| Product description | Name | VN2000 UHD Output Node |
| | Output resolution | HDMI Out: 3840×2160@30Hz (downward compatibility) |
| | Input resolution | HDMI In Out: 1920×1080@60Hz (downward compatibility) |
| | Image processing | Image decomposition, synthesis, frame overlapping, roaming, windowing. All windows can be an arbitrary size, location or superposition. |
| Technical parameters | Decoding ability | A single node can simultaneously decode 4-channel 4K, 16-channel 1080P and 32-channel 720P. |
| | Decoding format | Support standard H. 265, H. 264 MPEG4 Protocol. Support GB/T2818 Protocol and INVIF Protocol of the Ministry of Public Security. |
| | Synchronization precision | ≤20uS |
| | Large screen echo frame rate | 15 FPS |
| | Network delay | ≤120ms (1920×1080P@60Hz) |
| | Thermal design | Fanless design, 0db noise |
| | Installation method | Magnet or desktop |
| | Front panel | LED indicator light |
| Power interface | | DC12V input, Mini-Jack interface |
| Rear panel | Network interface | 2×RJ45 network interface, 1000M Base-T interface (including 1-channel network backup) |
| | Video interface | 2×HDMI, one-channel HDMI signal input, one-channel HDMI signal output |
| | Reset button | Restore factory setting |
| Control | Network protocol | DHCP, UDP, TCP/IP IP automatic acquisition/static assignment |
| | Control method | B/S framework, centralized management PC, iPad, Pad, touch all-in-one machine |
| Product appearance | Dimension | 235mm×125mm×35mm (L×W×H) |
| | Weight | Gross weight: 1.2Kg Net weight: 0.9Kg |
| Environmental requirements | Temperature | Storage: -20°C-80°C Operating: 0°C-70°C |
| | Temperature | 10-90%, non-condensing |
| | Elevation | ≤5000m |
| Others | Power | ≤15W |
| | MTBF | ≥60000H |
| | Accessory | Power adapter (12V2A) |

Specification parameters are subject to change without prior notice.