

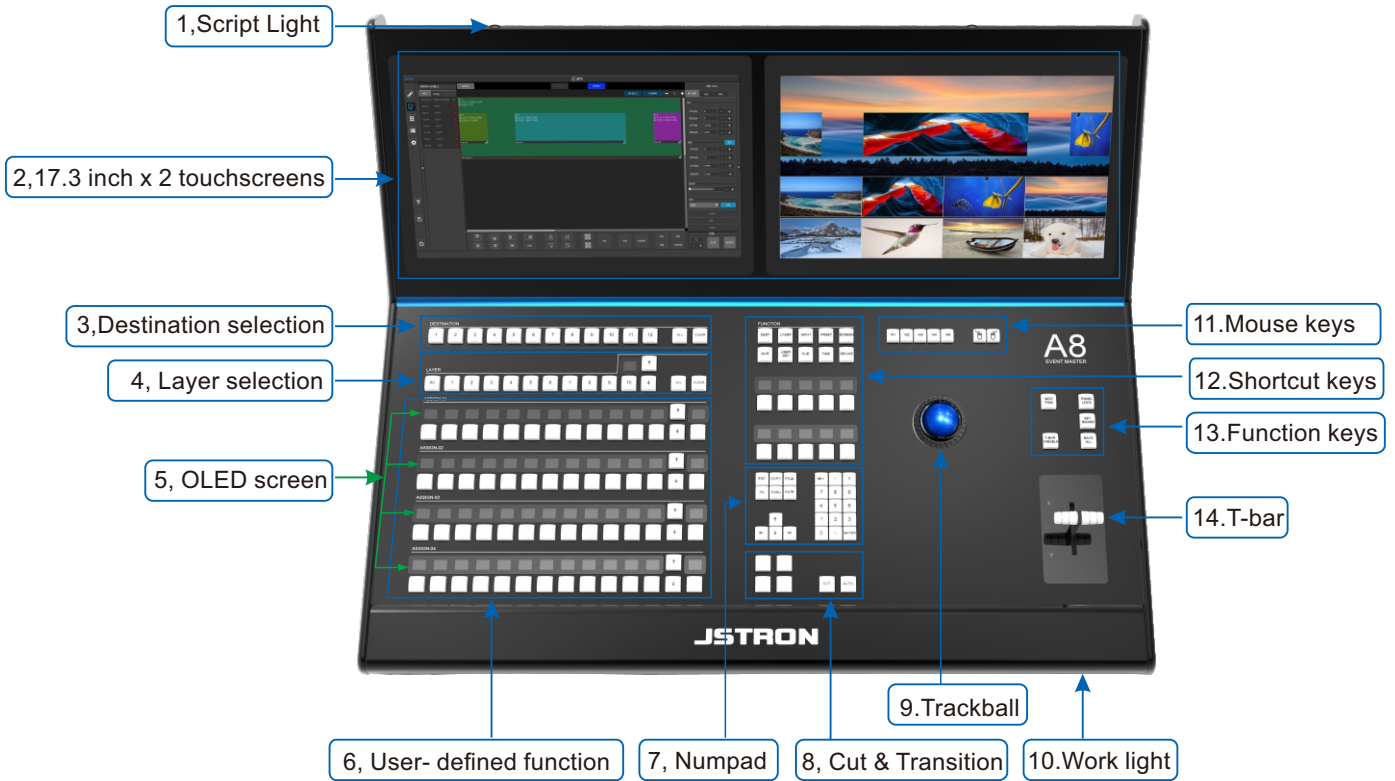
JSTRON • SPEED LEADER • A8 Event Master



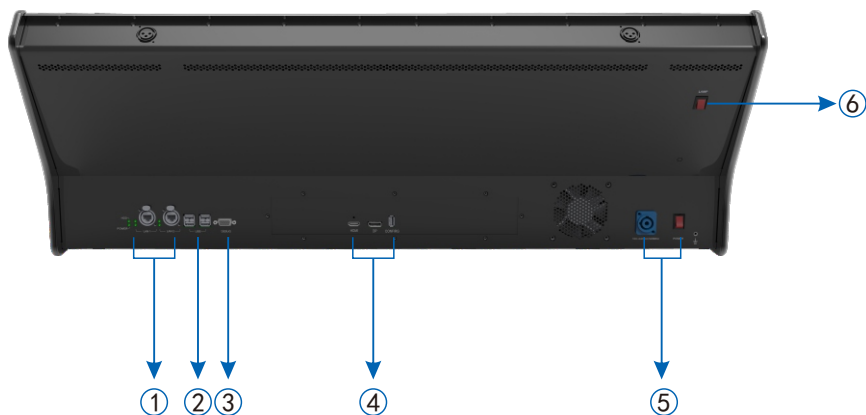
PRODUCT INTRODUCTION

The new-generation event master designed by Jstron is widely used in the live stage, video conference, exhibition, performance control and other fields, whose straightforward interface brings you comfortable experience and simple operation. It's equipped with two touchscreens, trackball, high precision T-bar and user-defined function buttons for your better manipulate.

FRONT PANEL DESCRIPTION



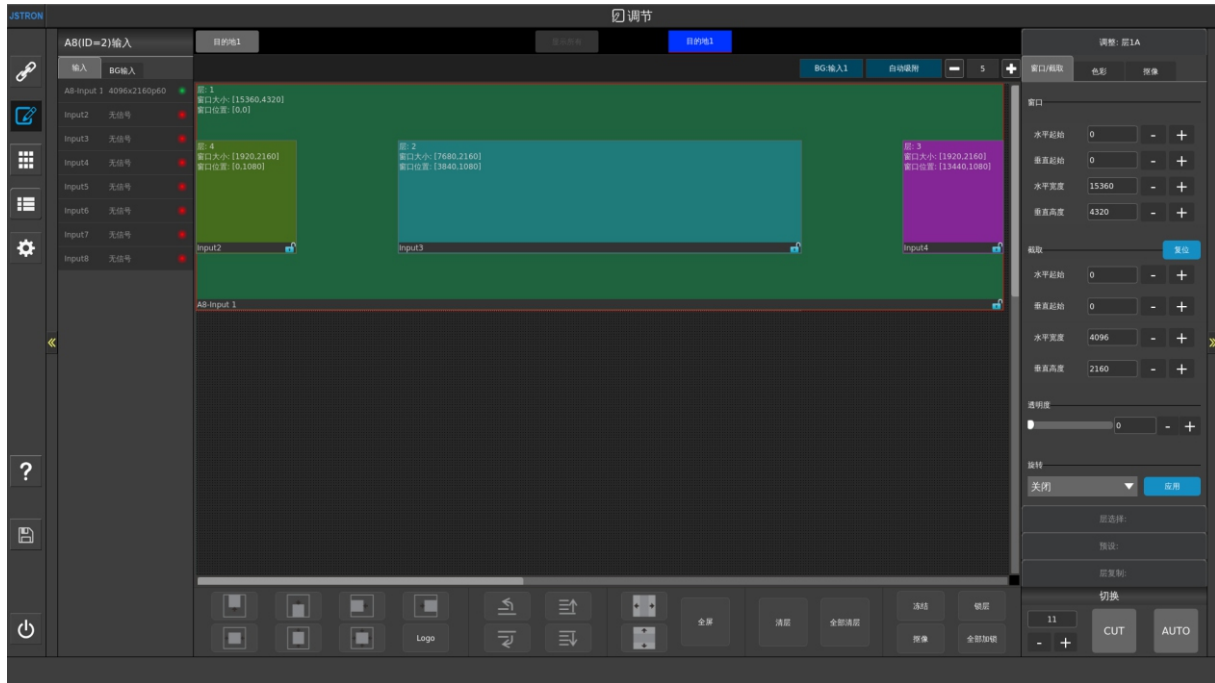
REAR PANEL DESCRIPTION



- ①--RJ-45 ②--USB port ③--RS232 ④--HDMI & DP input
- ⑤--Power connect & switch ⑥--Light switch

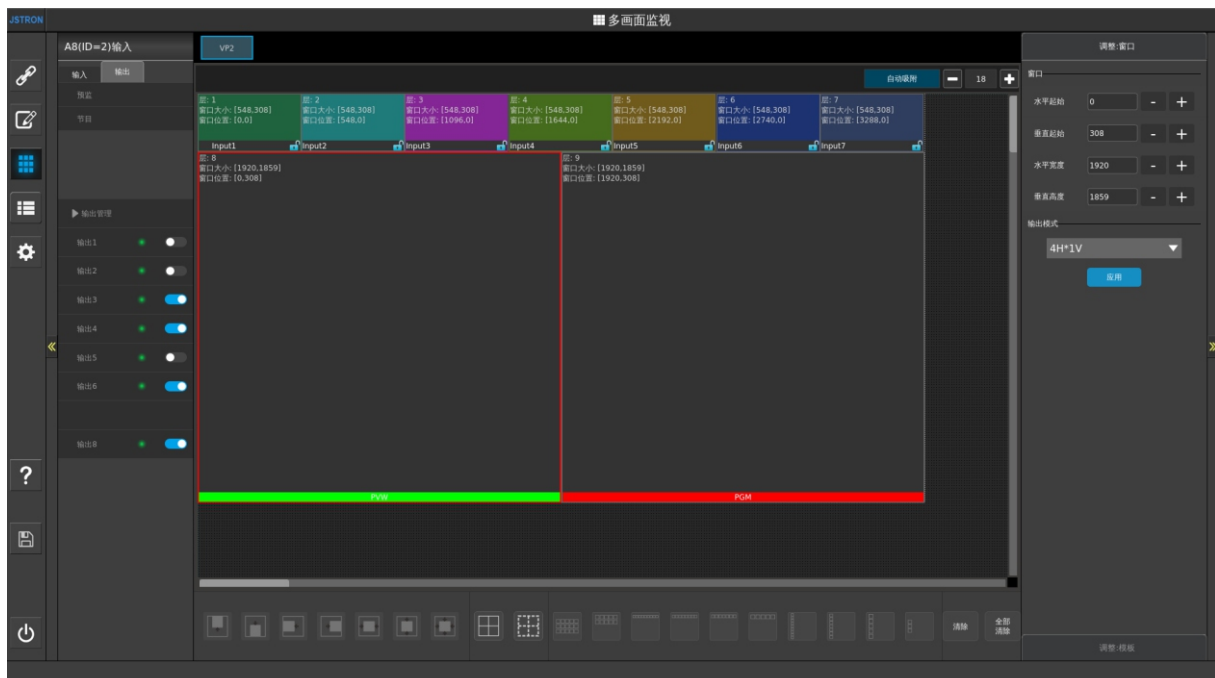
SYSTEM CONTROL

A8 Event Master is an upgraded version of A6 Plus Event Master. They share the same system with functional differences. Hugely simple and easy to grasp everything with trackball mouse keyboard and touchscreen.



MULTI-FUNCTION MONITORING INTERFACE

Here you can design your preset by touch, drag and zoom to change its size, position and layout. There are also five templates inside for your quick operation.



CUE PROGRAM LIST

This is a linked sequence of cues. Creating cues and timecode here. External commands can also be arranged and controlled through TCP connection.

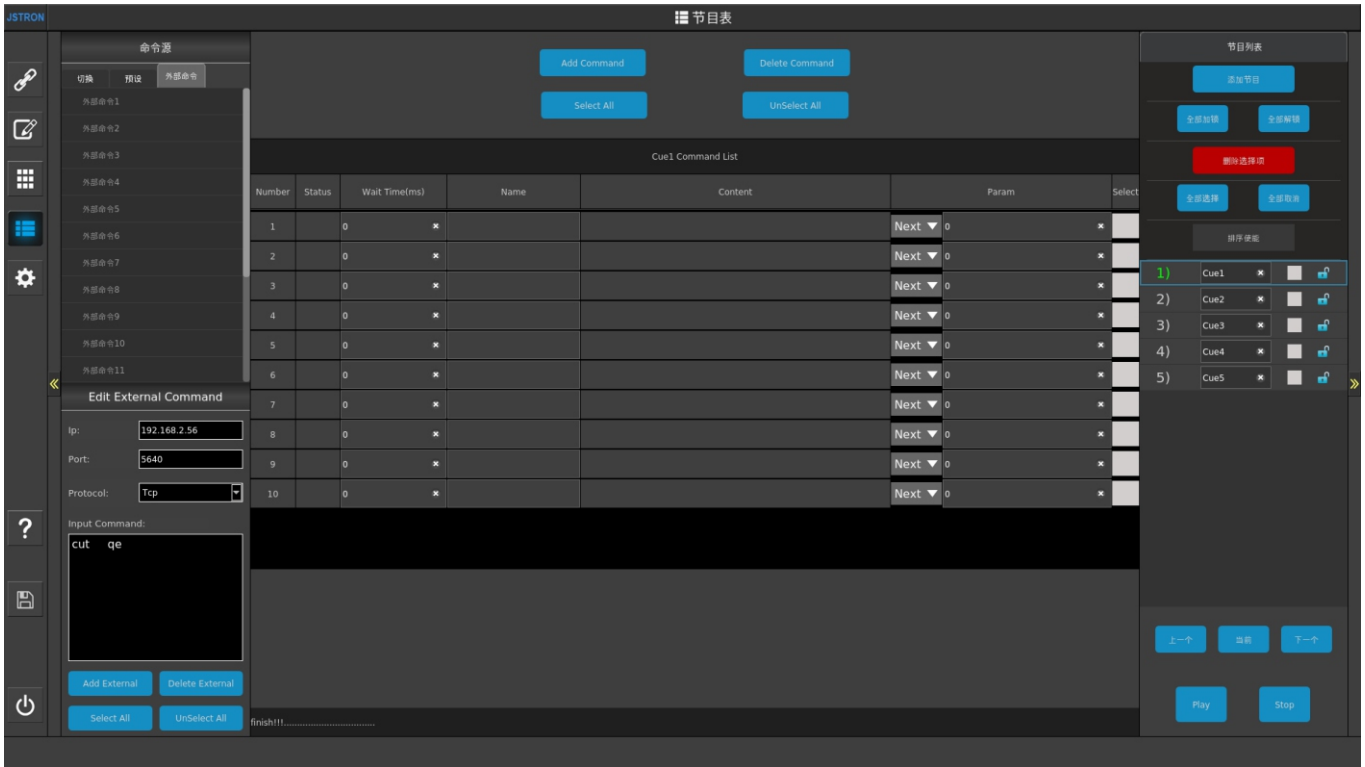
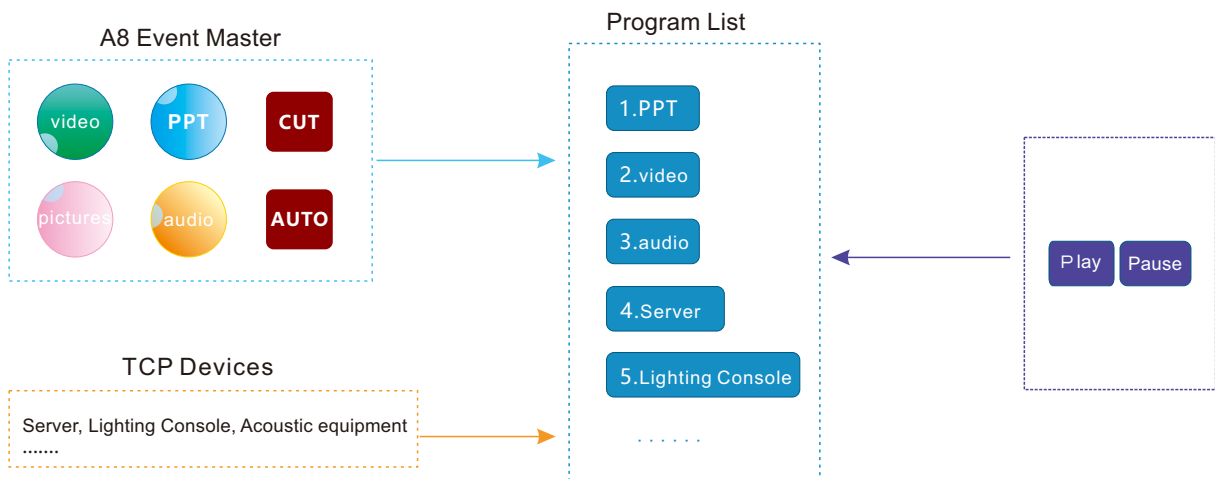
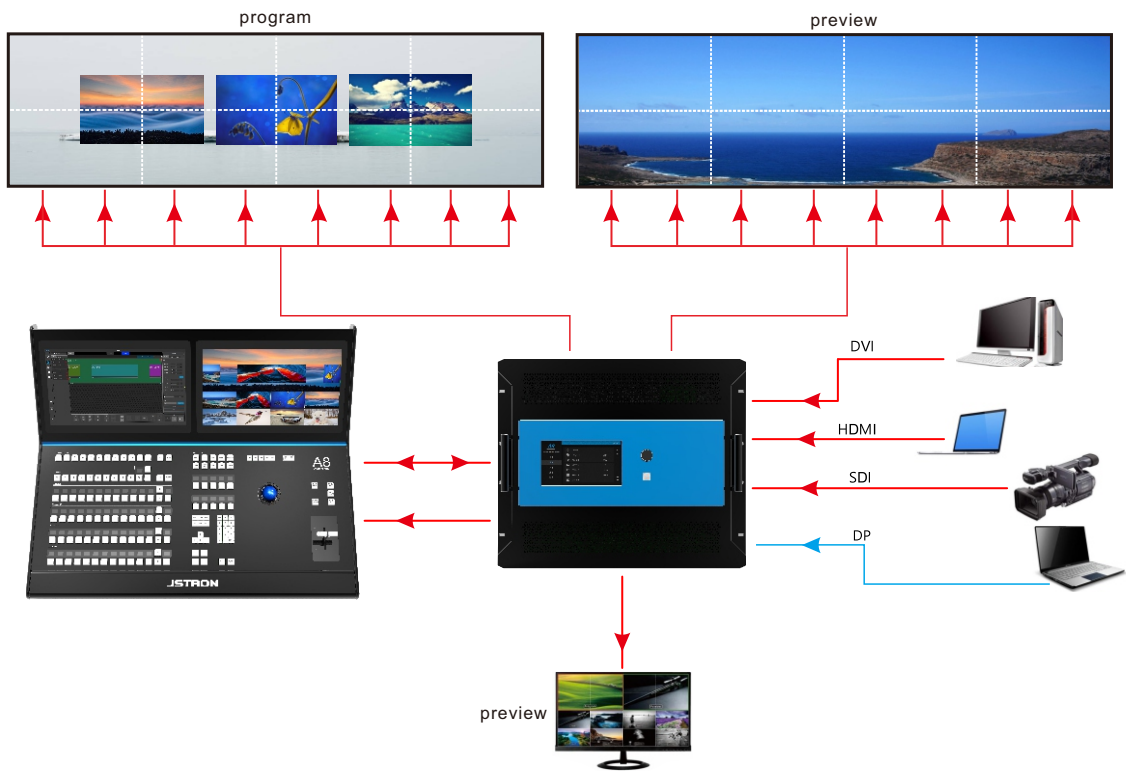


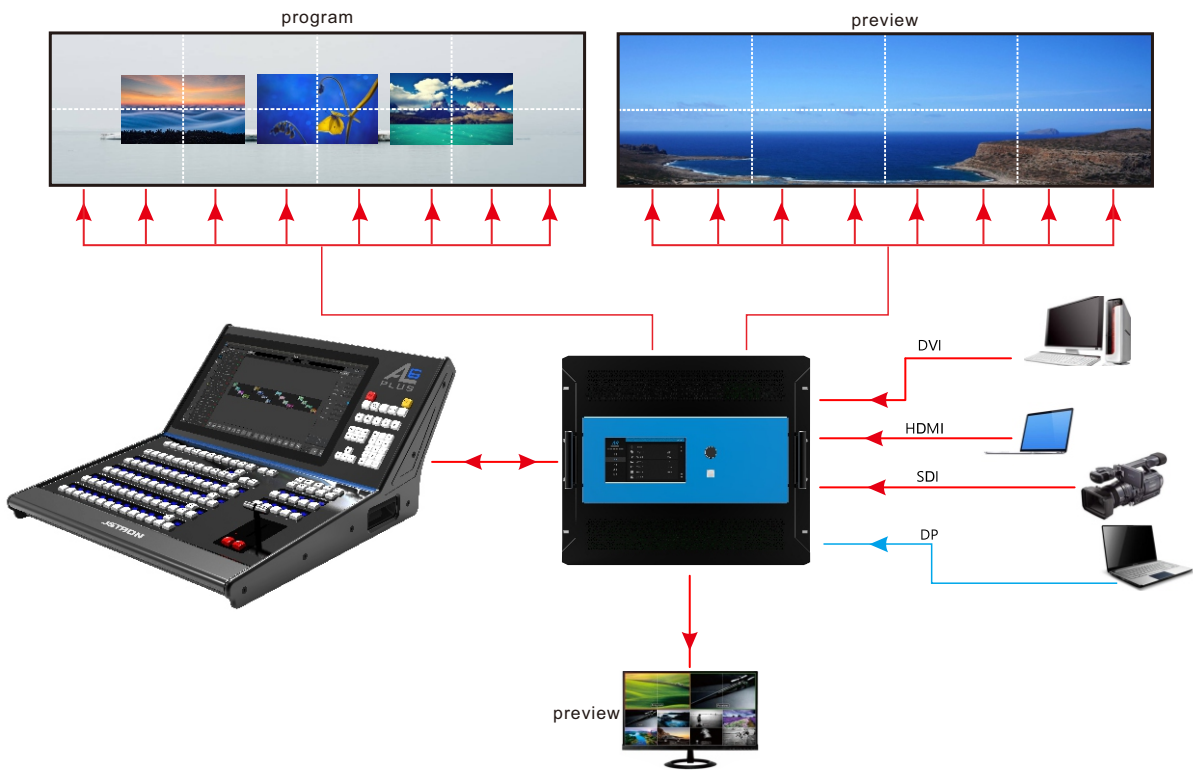
DIAGRAM OF CUE PROGRAM



A8 Event Master Cooperate With A8 VP



A6 PLUS Event Master Cooperate With A8 VP



SPECIFICATIONS

PRODUCT GUIDELINE

Item Number	Description
A8 Event Master	Event master

GENERAL

Weight	45KG
Dimension	886(D)x709(W)x322(H)(MM)
Power supply	100VAC – 240VAC 50/60Hz
Working temperature	0°C ~ 45°C

Specifications are subject to change without prior notice!

SHAPE SIZE UNIT : MM

